

# KIP 71 SERIES

INNOVATIVE VERSATILITY

*Experience the most  
advanced technology in  
technical printing*





## ADVANCED TECHNOLOGY

***KIP 71 Series Systems  
are the leading  
advanced solutions for  
technical printing  
professionals***



### ***Perfect View***

Adjustable  
12" touchscreen  
for the ideal  
viewing and  
management of  
system features

KIP 71 Series MFP systems offer innovative productivity and configuration versatility expanding the range of the KIP 71 Series systems to deliver high quality durable prints at a single touch with proven reliability in a space saving design.

Multi-function convenience. The productivity of the KIP 71 Series is designed to satisfy the most demanding needs of decentralized users.



# CONFIGURATION VERSATILITY

*Space Saving Performance*

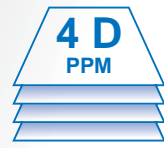
*Near Wall Installation*

*Fits Where You Need It*

Innovative productivity and configuration versatility expands the range of the KIP 71 Series MFP systems to meet the needs of technical printing professionals.



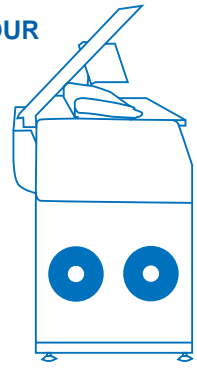
## KIP 71 SERIES Range of Productivity & Configuration



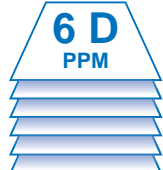
240 PRINTS PER HOUR



KIP 7171



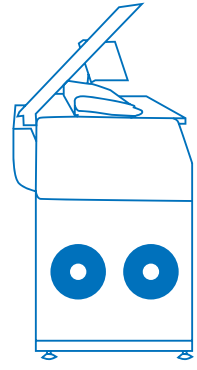
KIP 7172



360 PRINTS PER HOUR



KIP 7171



KIP 7172

## KIP 71 SERIES TOUCHSCREEN

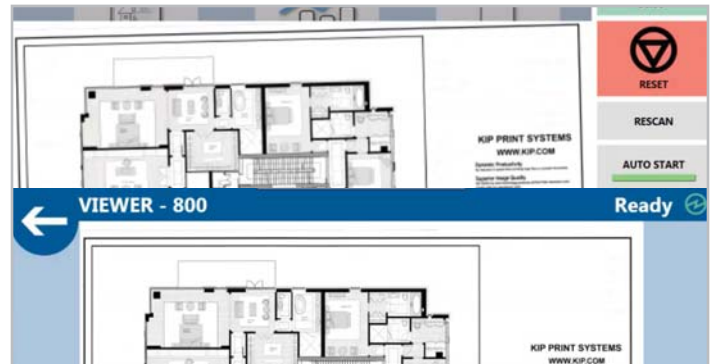
### Print, Copy and Scan Brilliantly

Brilliantly automate Print, Copy and Scan workflow at a single touch. Smart tablet functions offer unmatched easy and intuitive features with vivid real-time color image previews. KIP Touchscreen de-skew technology ensures the perfect scan or copy every time. The power of KIP Cloud Connect delivers project communication for anytime, anywhere collaboration. KIP's eight-point Area of Interest simplifies on-screen document editing accelerating print image modifications.

- 12" Smart-tablet simplicity
- Intuitive feature selection
- Vivid color image preview
- Cloud Connect
- Auto De-skew for copy and scan
- Area of Interest image editing
- Workflow automation templates
- One-touch access to features in 12 languages
- Pictorial feature guide
- Touchscreen articulates for the Perfect View



Smart Tablet Simplicity 12" Ultimate Color Display to Copy, Print and Scan with Vivid Color Image Previews and Intuitive Feature Selection for Easy Operation



Auto Deskew Image



Cloud Connect



Area of Interest

# KIP 71 SERIES SOFTWARE APPLICATIONS

## KIP IMAGEPRO One Application for all Wide Format Imaging

- Feature Rich Tool Selection
- High Definition Viewer
- Thumbnail Preview
- Quick Access Tool Bar
- Workflow Automation Templates
- Area of Interest
- Image Clean-up
- Easy Scanned File Renaming
- Secure Print

### **KIP Windows Driver**

WHQL Certified

### **KIP AutoCAD Driver**

Certified integrated printing from Autodesk

### **Printer Status SNMP**

Anywhere, anytime centralized updates

**KIP Accounting\*** – Turn printing into revenue. KIP Accounting consolidates control of user account data and printing rules for all imaging functions.

**KIP Cost Center\*** – Automatically generates visually attractive production reports for user, project and department level accounting data.

**KIP Card Reader System\*** – Secures KIP systems using contactless card reading technology for copy, print and scan functions for workgroups.

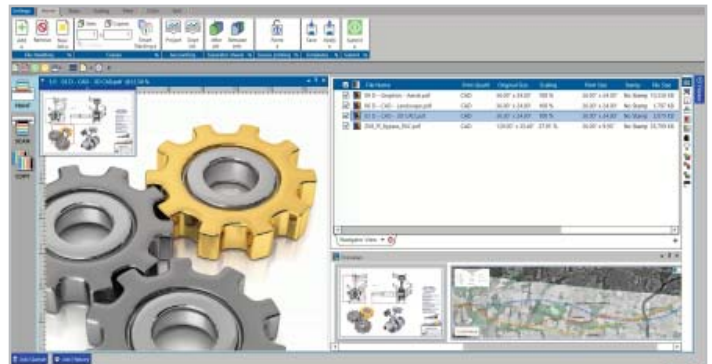


### **KIP Digital Data Security Features**

Proven to meet Department of Defense specifications. Data Encryption and Virus Scanning compatible.



Exceptional Value - Unmatched Feature Performance  
Included with KIP 71 Series Systems



High Definition Viewer

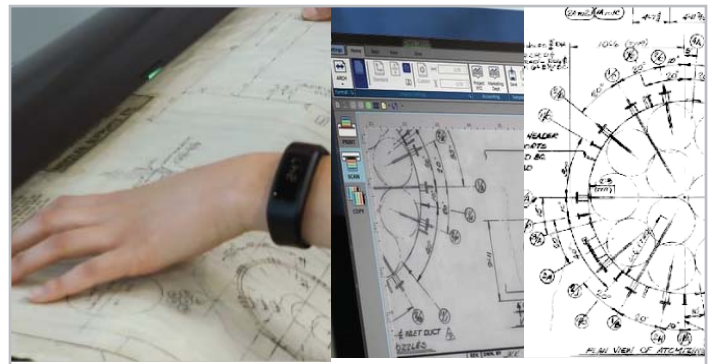


Image Clean Up  
Before & After



Scanned File Renaming

\*Optional

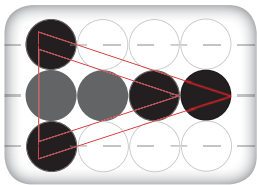
## KIP 71 SERIES EXCLUSIVE TECHNOLOGIES

### **High Definition Print (HDP) Technology**

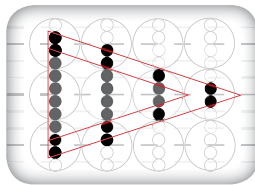
KIP HDP is a green technology that is 100% toner efficient, reducing the cost of printing and returning outstanding value and industry leading low cost of ownership. KIP Systems do not employ carriers, developers or waste receptacles that require disposal and replacement.

### **600 x 2400 dpi – High Resolution**

KIP Systems feature crisp, 600 x 2400 dpi printing for sharper details and extremely smooth grayscales. This higher resolution allows the system to enhance curves, diagonal lines and arcs by smoothing out line edges with excellent precision.



600 dpi x 600 dpi



600 dpi x 2400 dpi

### **Consistent Print Quality**

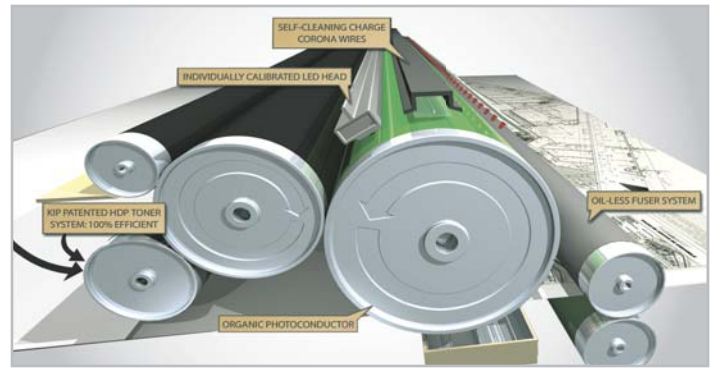
KIP Systems deliver solid blacks, smooth grayscale and uniform print quality from the first to the last page of a print job. Advanced technologies including automatic environmental adjustments and contact-based developer units keep your print quality on track through seasonal climate changes.

### **Media Capacity**

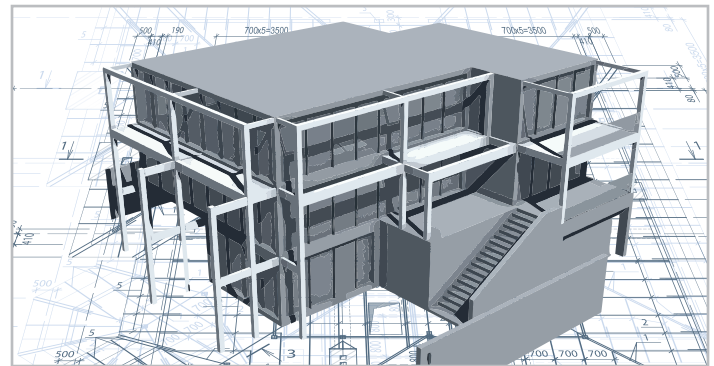
KIP Systems feature auto-switching media drawers to ensure non-stop print production and maximum media versatility. Media status is illustrated on the touchscreen. KIP Systems feature a user friendly “End Cap” design for easy loading of media rolls.

### **Accurate Print Sets**

KIP Systems provide precise cut lengths that conform to KIP sheet size specifications. Electronic monitoring of media while printing provides an accurate page cut length. Print jobs are produced at an identical sheet size, resulting in a professional presentation.



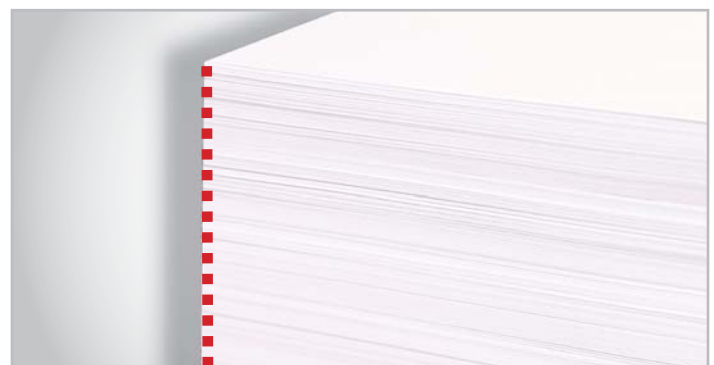
100% toner efficiency  
Low cost of operation



Highest image durability



End caps for easy  
changing of media rolls



KIP precision cutting  
for accurate sheet sizes



## KIP 71 SERIES INTEGRATED FINISHING

### **Document Automation**

KIP integrated folding and finishing systems automate wide-format document finishing by providing folding, stacking and collation in a compact design.

KIP online stackers & folders intelligently communicate with KIP printers and are fully integrated with KIP software applications & print drivers to provide seamless workflow integration.

### **KIPFold 1000**

The KIPFold 1000 is a compact but powerful online folder designed to easily, conveniently and quickly fan fold documents with KIP 71 Series print systems.

### **KIPFold 2800**

The KIPFold 2800 system automates wide-format document folding requirements by providing folding, stacking and collation in a compact design with quiet operation.



KIP 1200 Stacker



KIPFold 1000



KIPFold 2800





# KIP 71 SERIES



## SPECIFICATIONS

### General

Description	Monochrome wide format print/copy/scan with color scanner
Type	Electrophotography (LED) with organic photoconductor (OPC) and closed toner system
Range of Productivity	6 D or 4 D per minute / 360 or 240 prints per hour
Warm Up Time (from cold)	Less than 2 minutes from standby
Configurations	MFP
Roll Options	2 Roll or 1 Roll
Output Delivery	Top / Optional Rear
Dimensions	63" (w) x 28" (d) x 59" (h) / 1590 mm x 700 mm x 1510 mm
Weight	538 lb. / 244 kg
Electrical Requirements	120V plus/minus 10%, 50/60Hz, 12A
Power Consumption (Standby)	500W
Power Consumption (Printing)	1,100W

### Printer

Print Resolution	600 dpi x 2400 dpi
Roll Capacity	2 Roll or 1 Roll
Output Sizes Width	11" - 36"
Output Sizes Length	20' / 6 m (standard), 500'/150 m based on media validation
Paper Weight	Bond 18-24 lb., Vellum/Translucent Bond 18-20 lb., film 3.5 - 4 mil
Media Type	Bond / Vellum / Film

### Controller

Controller Type	KIP System K Controller with Windows 7 Embedded
Memory	2GB DDR3 Standard - Upgradable to 4 GB
Hard Drive	Minimum 320 GB - Unlimited Upgrade
Supported File Type	DWF, PDF, PDF-A, HPGL 1/2, HP-RTL, Calcomp 906/907, CALS Group 4, TIFF Group 4, CIT/TG4, Grayscale TIFF, TIFF Packbits, PNG, JPEG

### Scanner

Scanner Type	CIS
Scan Resolution	600 dpi
Scan Format	TIFF, Multipage TIFF, PDF, PDF-A, Multipage PDF, DWF, JPEG
Scan Destination	Local USB (removable media), Mailboxes (local), FTP, SMB Cloud: Google Drive/Dropbox/Box/OneDrive/SharePoint
Original Size Width	11" - 36" / 210 mm to 914 mm
Original Thickness	0.05 mm - 1.60 mm (image quality over 0.25 mm not guaranteed)

[WWW.KIP.COM](http://WWW.KIP.COM) | 800.252.6793